

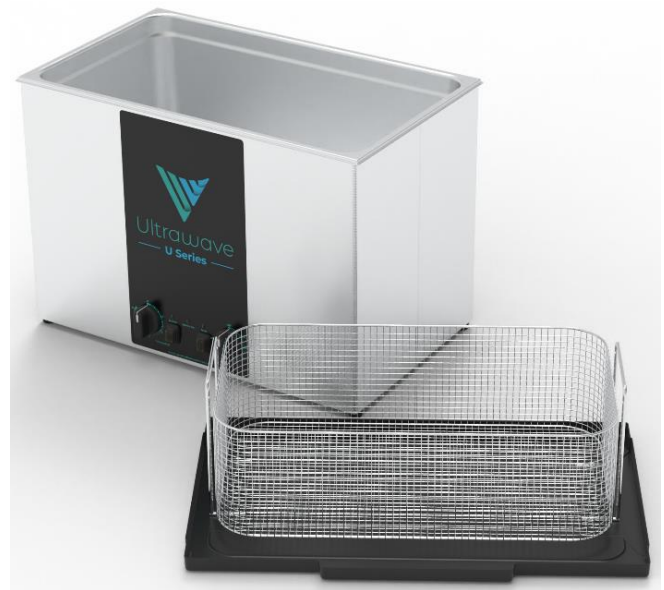
# U2500H

## 25Litre Ultrasonic Bath (Heated)

Ultrawave's U-Series is compact and user friendly, offering effective cleaning and processing of small items in both professional and domestic applications.

These include healthcare, podiatry, tattooists, jewellers and many more.

Available in heated and unheated versions, the **U-Series** allows simple control of time (0 to 15 minutes) and temperature (ambient to 70°C) where heated options are selected.



The **U2500H** is a 25Litre ultrasonic bath with heating function to reduce processing time. Each **U-Series** is supplied complete with a stainless steel basket and ABS plastic lid, useable as a drip tray to collect excess water when the basket is removed from the tank.

The **U2500H** provides the cost benefits of excellent entry level ultrasonics with Ultrawave's long renowned quality and reliability.

Specifications are subject to change for continual improvements

# U2500H

## 25Litre Ultrasonic Bath (Heated)

Construction Case	304 Stainless Steel
Construction Tank	304 Stainless Steel
Control	Analogue (Time & Temperature)
Overall Dimensions	550 x 345 x 365mm (WxDxH)
Tank Dimensions	500 x 300 x 200mm (WxDxH)
Internal Basket Dimensions	470 x 265 x 130mm (WxDxH)
Maximum Capacity	28Litres
Working Capacity	25Litres
Ultrasonic Power	400W
Ultrasonic Power (per litre)	16W/Litre
Operating Frequency	32 - 38kHz
Maximum Heating Capacity	Ambient - 70°C
Heater Power	650W
Timer	0 - 15 minutes
Mains Connection	220 - 240Vac (50 - 60Hz)
Drain Outlet	1/2" BSP valve (located at rear of machine)
Lid	ABS Plastic
Basket	304 Stainless Steel
Gross Weight (inc. lid, basket & packaging)	18.5kg
Net Weight	17kg
Warranty	1 Year as standard - extend to 3 Years if registered online with us (within 30days of purchase)



# WolfLabs

**Pricing on any accessories shown can be found by keying the part number into the search box on our website.**

The specifications listed in this brochure are subject to change by the manufacturer and therefore cannot be guaranteed to be correct. If there are aspects of the specification that must be guaranteed, please provide these to our sales team so that details can be confirmed.

**[www.wolflabs.co.uk](http://www.wolflabs.co.uk)**

**Tel : 01759 301142**

**Fax : 01759 301143**

**[sales@wolflabs.co.uk](mailto:sales@wolflabs.co.uk)**

Please contact us if this literature doesn't answer all your questions.